

HISTORY OF THE PRESERVE

The Sonoita Creek Wildlife Corridor was identified in an Arizona Game and Fish funded study in 2006 as an important corridor for black bear, mule deer, mountain lion and the endangered jaguar moving between northern Mexico and the Arizona Sky Islands. While most of the corridor is on national forest land, the corridor passes through a two-mile wide stretch of private land along AZ Highway 82 just north of Patagonia.

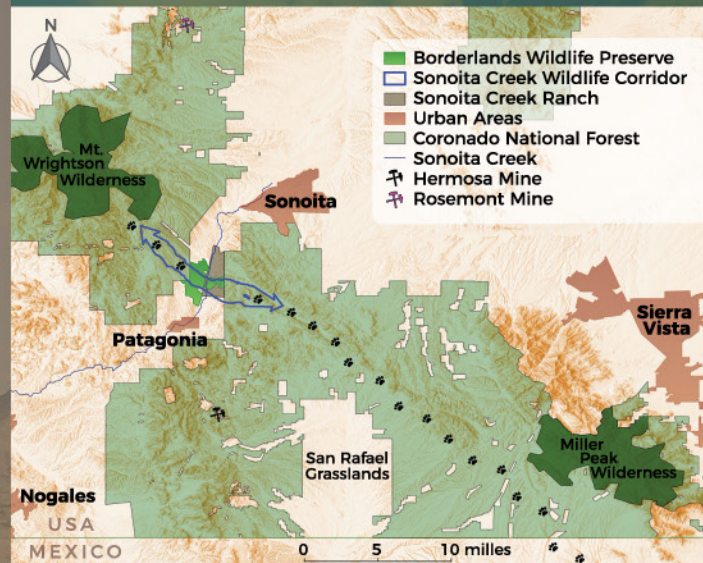
That same year, the Arizona Department of Real Estate approved the sale of 189 lots in the newly-platted Three Canyons subdivision under construction in the heart of the wildlife corridor. Paved roads and electricity were installed in Phase I located in the southern part of the subdivision. Of the 66 Phase I lots, 16 lots were sold before a bank foreclosure halted development in 2008.

In 2014 a group of concerned citizens intent on protecting critical wildlife habitat seized the opportunity to purchase the remaining 173 lots of the stalled housing project for the expressed purpose of setting most of the land aside as an integral part of the Sonoita Creek Wildlife Corridor. They formed Wildlife Corridors, LLC with a plan to sell just 24 of the Phase I lots and retire the development rights on the remaining 149 lots, thereby creating the initial 1200 acre Borderlands Wildlife Preserve which has since grown to 1800 acres and counting, and the re-named Wildlife Haven residential neighborhood.



The Sky Islands, encompassing more than thirty mountain ranges, are recognized as a globally-significant biodiversity hotspot, however, the valleys connecting the ranges are highly threatened by development and fragmentation.

As a segment of the larger Sonoita Creek Wildlife Corridor, the 1800 acre and growing Borderlands Wildlife Preserve is protected and managed to conserve critical wildlife habitat, and to maintain a route for migratory species.



Wildlife Corridors, LLC seeks to facilitate novel public-private partnerships to protect open land, improve habitat and facilitate wildlife movement.

  @borderlandswildlifepreserve

CONTACT US
PO Box 121 Patagonia, AZ 85624
P: 520-216-4148
E: wildlife@borderlandsrestoration.org
www.borderlandswildlifepreserve.org

BORDERLANDS WILDLIFE PRESERVE



TRAIL AND USE GUIDE



BORDERLANDS RESTORATION NETWORK

Owned by Wildlife Corridors, LLC. Managed in partnership with Borderlands Restoration Network

TRAILS

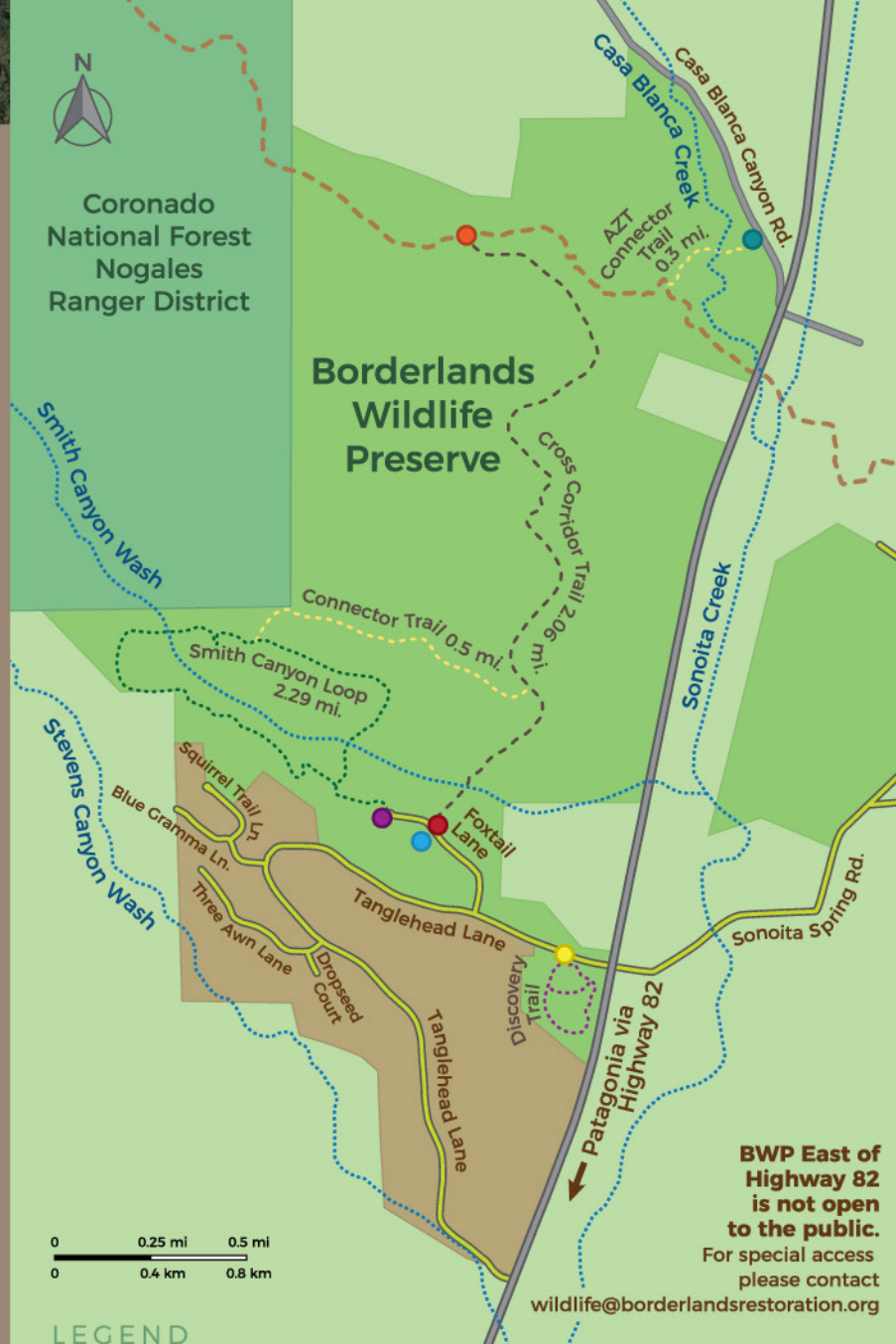
While visiting the Borderlands Wildlife Preserve take time to explore the following trails.

Smith Canyon Loop Trail, 2.29 mi/3.67 km: This gentle two-mile trail traverses both ridges of Smith Canyon. Two side trails on the south ridge lead to benches overlooking watering stations used by wildlife living in or passing through the corridor. Your chances of seeing wildlife will be greatly enhanced if you sit still and quietly enjoy the beauty and solitude of this magnificent landscape. This trail is for hiking only.

Cross Corridor Trail, 2.06 mi/ 3.3 km: This trail is open to hiking, cycling, and equestrian use. This trail provides access to the Arizona Trail. The trailhead is located at the Smith Canyon gate opposite Dragonfly Pond.

Connector Trail, .52 mi/.83 km: This trail links the Smith Canyon Loop Trail and the Cross Corridor Trail.

The Arizona Trail is an 800-mile nonmotorized path from Mexico to Utah, and a portion of this National Scenic Trail traverses the preserve. To the northwest, the Arizona Trail travels along the foothills of the Santa Rita Mountains on its way toward the Rincon and Santa Catalina Mountains. To the southeast, the trail passes through the Canelo Hills and Huachuca Mountains. To learn more, please visit aztrail.org. The Arizona Trail is open to hiking, cycling, equestrian use, and leashed dogs.



LEGEND

- Parking – Kiosk
- Trailhead – Bikes/Horses Permitted
- Dragonfly Pond
- Parking and Trailhead
- Arizona Trail – Parking and Kiosk
- End of the Cross-Corridor Trail
- Arizona Trail
- AZT Connector Trail
- Smith Canyon Loop Trail
- Cross-Corridor Trail
- Discovery Trail
- Wildlife Haven Residential Neighborhood
- Roads

GUIDELINES FOR USE

As you enjoy these surroundings, we invite you to partner with us in respecting and protecting the plants and animals who inhabit this treasured land. Please practice good stewardship by observing these simple rules as you enjoy the preserve's beauty and peacefulness:

- ▶ Please park in designated areas only.
- ▶ Please respect private property and stay on the designated roads and trails.
- ▶ **Dogs are not permitted off-leash anywhere within the preserve.**
- ▶ Dogs are not permitted on Foptail Lane, the Smith Canyon Loop Trail, the Connector Trail, or the Cross Corridor Trail.
- ▶ Dogs are permitted on the paved roads within the Wildlife Haven residential neighborhood, on the Discovery (under construction) and Arizona Trail/AZT Connector Trail **but must remain leashed.**
- ▶ Horses and bikes are permitted only on the Cross Corridor and Arizona Trail.
- ▶ Motorized vehicles of any kind are not permitted on the hiking trails.
- ▶ Firearms, overnight camping, open fires or BBQ's of any kind, and hunting and collection of any materials are prohibited throughout the preserve, the Wildlife Haven residential neighborhood, and the buffer zone.
- ▶ When hiking in the preserve, take plenty of water, sun protection and leave no trace of your use.
- ▶ There are no trash receptacles in the preserve, please pack out what you pack in.